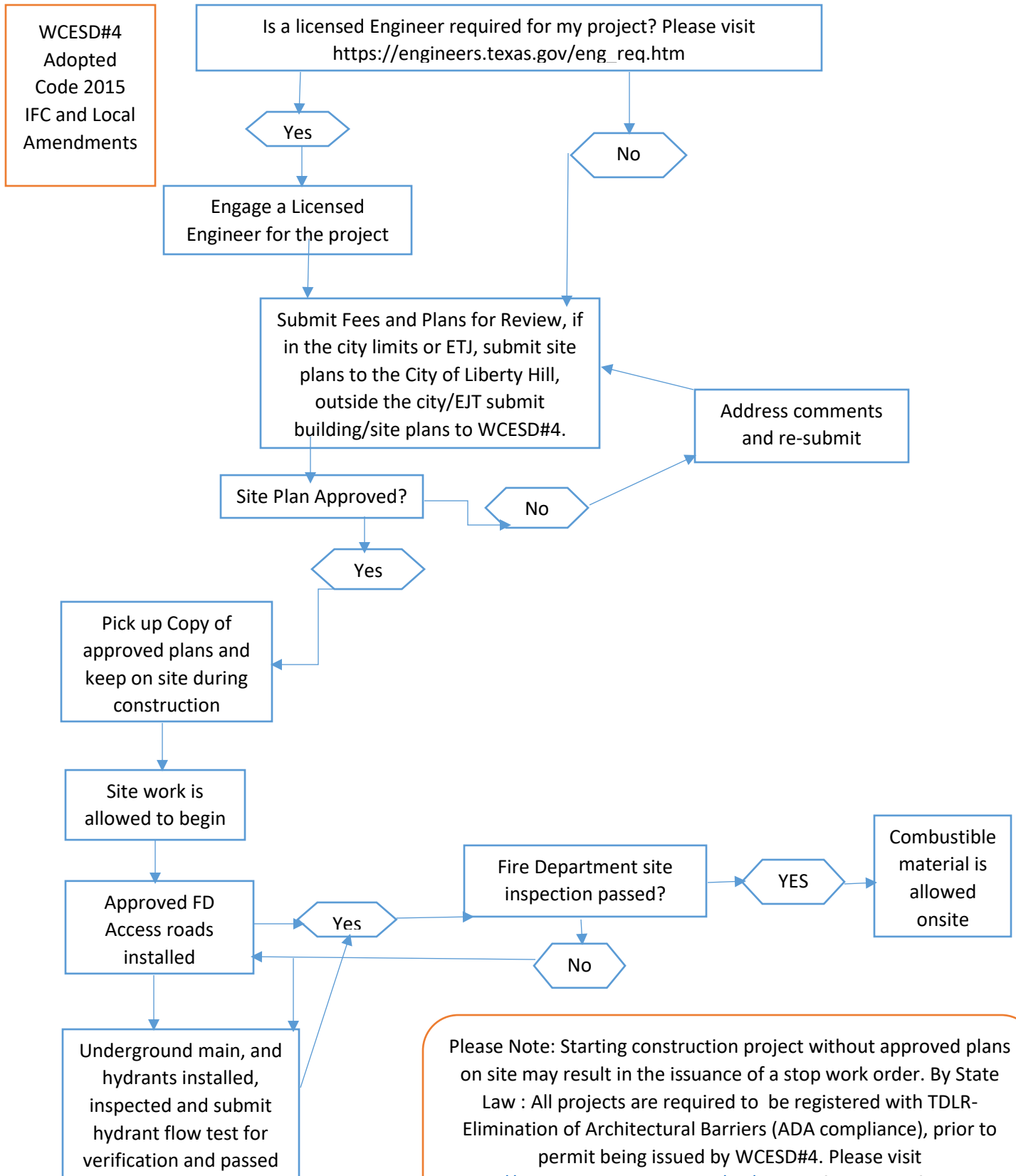


WCESD#4

Requirements for Civil and Building Review Plan Flow Chart



Please Note: Starting construction project without approved plans on site may result in the issuance of a stop work order. By State Law : All projects are required to be registered with TDLR- Elimination of Architectural Barriers (ADA compliance), prior to permit being issued by WCESD#4. Please visit <http://www.license.state.tx.us/ab/ab.htm> for more information